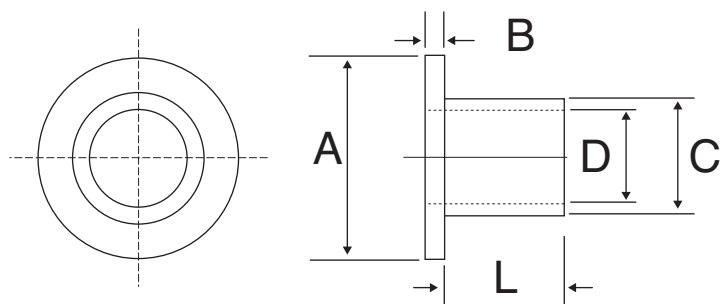


# Nylon Screw Insulators

561-10SC004003, 561-04004, 561-04006, 561-04012, 561-06004,  
 561-06012, 561-06018, 561-06025, 561-06050, 561-08012, 561-08025,  
 561-08037, 561-08050, 561-10014, 561-10018, 561-10025, 561-10037,  
 561-10075, 561-25012, 561-25018, 561-25025, 561-25037, 561-25050,  
 561-25075, 561-31262

Date Last Revised: 10/11/10



SPECIFICATIONS	
Material:	Nylon 6/6
Thermal Tolerance:	-40°F to +185°F

Screw insulators may also be used as light load bearings in many applications.

Part Number	Description	L	A	B	C	D
561-10SC004003	SC 4	0.031 (±0.015)	0.235 (±0.005)	0.047 (±0.015)	0.145 (±0.005)	0.115 (±0.005)
561-04004	SC 4	0.047 (±0.015)	0.235 (±0.005)	0.047 (±0.015)	0.145 (±0.005)	0.115 (±0.005)
561-04006	SC 4	0.063 (±0.015)	0.235 (±0.005)	0.047 (±0.015)	0.145 (±0.005)	0.115 (±0.005)
561-04012	SC 4	0.125 (±0.015)	0.235 (±0.005)	0.047 (±0.015)	0.145 (±0.005)	0.115 (±0.005)
561-06004	SC 6	0.047 (±0.015)	0.290 (±0.005)	0.047 (±0.015)	0.170 (±0.005)	0.140 (±0.005)
561-06012	SC 6	0.125 (±0.015)	0.290 (±0.005)	0.047 (±0.015)	0.170 (±0.005)	0.140 (±0.005)
561-06018	SC 6	0.188 (±0.015)	0.290 (±0.005)	0.047 (±0.015)	0.170 (±0.005)	0.140 (±0.005)
561-06025	SC 6	0.250 (±0.015)	0.290 (±0.005)	0.047 (±0.015)	0.170 (±0.005)	0.140 (±0.005)
561-06050	SC 6	0.500 (±0.015)	0.290 (±0.005)	0.047 (±0.015)	0.170 (±0.005)	0.140 (±0.005)
561-08012	SC 8	0.125 (±0.015)	0.344 (±0.005)	0.063 (±0.015)	0.205 (±0.005)	0.173 (±0.005)
561-08025	SC 8	0.250 (±0.015)	0.344 (±0.005)	0.063 (±0.015)	0.205 (±0.005)	0.173 (±0.005)
561-08037	SC 8	0.375 (±0.015)	0.344 (±0.005)	0.063 (±0.015)	0.205 (±0.005)	0.173 (±0.005)
561-08050	SC 8	0.500 (±0.015)	0.344 (±0.005)	0.063 (±0.015)	0.205 (±0.005)	0.173 (±0.005)
561-10014	SC 10	0.141 (±0.015)	0.399 (±0.005)	0.063 (±0.015)	0.260 (±0.005)	0.200 (±0.005)
561-10018	SC 10	0.188 (±0.015)	0.399 (±0.005)	0.063 (±0.015)	0.260 (±0.005)	0.200 (±0.005)
561-10025	SC 10	0.250 (±0.015)	0.399 (±0.005)	0.063 (±0.015)	0.260 (±0.005)	0.200 (±0.005)
561-10037	SC 10	0.375 (±0.015)	0.399 (±0.005)	0.063 (±0.015)	0.260 (±0.005)	0.200 (±0.005)
561-10075	SC 10	0.750 (±0.015)	0.399 (±0.005)	0.063 (±0.015)	0.260 (±0.005)	0.200 (±0.005)
561-25012	SC 250	0.125 (±0.015)	0.513 (±0.005)	0.063 (±0.015)	0.312 (±0.005)	0.260 (±0.005)
561-25018	SC 250	0.188 (±0.015)	0.513 (±0.005)	0.063 (±0.015)	0.312 (±0.005)	0.260 (±0.005)
561-25025	SC 250	0.250 (±0.015)	0.513 (±0.005)	0.063 (±0.015)	0.312 (±0.005)	0.260 (±0.005)
561-25037	SC 250	0.375 (±0.015)	0.513 (±0.005)	0.063 (±0.015)	0.312 (±0.005)	0.260 (±0.005)
561-25050	SC 250	0.500 (±0.015)	0.513 (±0.005)	0.063 (±0.015)	0.312 (±0.005)	0.260 (±0.005)
561-25075	SC 250	0.750 (±0.015)	0.513 (±0.005)	0.063 (±0.015)	0.312 (±0.005)	0.260 (±0.005)
561-31262	SC 312	0.625 (±0.015)	0.620 (±0.005)	0.063 (±0.015)	0.360 (±0.005)	0.320 (±0.005)

RoHS Compliant

Available from Mouser Electronics  
 1-800-346-6873 / www.mouser.com

EPD-200680